

# **BNC** **ENERJİ**

## **Saha Servis**



[www.bncenerji.com](http://www.bncenerji.com)



BNC Enerji

bncenerji



bncenerji



bncenerji

## ABOUT US

BNCENERJİ, Enerji Santrallerine hizmet vermek amacı ile Cemal Binici tarafından kurulmuş ve faaliyetlerine başlamıştır. Başlıca faaliyet alanlarımız, iş ortaklarıyla birlikte;

- Buhar Türbinleri,
- Gaz Türbinleri,
- Buhar ve Gaz Türbin Generatörleri,
- Hidroelektrik santrallerin genaratör arıza tespiti, kaplin ayarı bakım ve onarımlarının yapılması işidir.
- WHR türbinleri ve generatör bakım,revizyon işleri,
- Büyük motor ve pompaların yatak bakımları ve kaplin ayar işleri,
- Her marka generatör demontaj tool imalatı işidir.

## OUR VALUES

In line with the supply and demands of our customers, with our valuable and successful staff, effective and to provide efficient service. In addition, giving importance to teamwork with our responsibility in projects Based on the awareness of the concept of "good job".

### OUR VISION

To offer our 30 years of knowledge and experience to our valued customers at the point of solution.

## OUR MISSION

In line with the supply and demands of our customers, with our valuable and successful staff, effective and to provide efficient service. In addition, giving importance to teamwork with our responsibility in projects Based on the awareness of the concept of "good job".

## OUR TARGET

- At the highest level with the service concept that meets all expectations and the quality image that is constantly provided to ensure customer satisfaction.
- Continuous solution partner for our customers by producing timely and fast solutions for our customers be.
- Keeping its experience and knowledge in the sector dynamic with technological developments, preferred and to be a reliable company.
- To comply with the rules of our quality management system and to achieve our goals, improve.

## OUR ACTIVITIES,

### A-Gas Turbines Maintenance and Repair

- Turbine disassembly and assembly.
- Turbine and generator measurements before dismantling the receipt.
- Performing rotor runout control.
- Turbine rotor disassembly and assembly.
- Sandblasting of disassembled parts.
- Gas turbines rotor and stator maintenance.
- Turbine rotor chemical cleaning processes or Sandblasting the wings with dry ice.
- Visual control and maintenance of combustion chambers. replacement of ceramics and burner.
- Disassembly, maintenance and installation of turbine valves.
- Hot-GasPath (hot gas path) maintenance.
- Change of fixed-moving wings.
- Turbine bearings control and maintenance.
- Maintenance and testing of fuel valves
- Compressor section maintenance.
- Turbine coupling adjustment.
- Oil tanks, oil pumps and oil heat exchangers maintenance, oil changes.
- Maintenance of auxiliary systems.
- Turbine insulation disassembly and assembly.
- Maintenance of turbine and combustion chambers.
- Replacing the burners in the combustion chamber.
- Maintenance and testing of existing burners.
- Fixed wing rings in the türbine maintenance and testing.
- Diffusers disassembly, maintenance and assembly.
- Turbin rotor Remounting, maintenance, assembly and tests.
- The turbine is movable and fixed in the compressor. wing disassembly and assembly.
- Cleaning of turbine and compressor blades, tests.
- Control of gas lines, maintenance of control valves.
- Combustion chamber ceramic controls and replacement.
- Maintenance of gas turbine air dampers. renewal of silencers.
- Performing NDT tests.

- Maintenance and repair of the virus system.
- Performing NDT tests.
- Maintenance and repair of the virus system.

### B-Gas Turbine Generator Maintenance and Repair

- Manufacturing of rotor disassembly apparatus.
- Rotor disassembly and assembly.
- Rotor and retaining ring runout control records.
- Chemical of generator rotor and stator cleaning operations.
- Control of generator air gaps.
- Maintenance and maintenance of generator diffuser and fan blades controls.
- Retaining ring disassembly and assembly, control of isolations.
- Control cleaning of generator coolers.
- Control and maintenance of generator beds.
- Generator warning system disassembly and maintenance.
- Winding heads controls.
- Air gap measurement.
- Lath tightness test.
- Heater tests.
- Controls of rotor fan blades and bolts.
- Balance weight checks.
- Generator and stator winding control, AC and DC insulation resistance measurement (Megger, Power Factor Tip-up, Partial discharge) Core test (ELCID).
- Control of rotor and stator insulation paints and care.
- Warning ring ovality control and cleaning-in-place grinding process.
- Maintenance of auxiliary systems.
- Performing NDT tests.
- Generator stator coil gap measurement.



## OUR ACTIVITIES,

### A-Steam Turbine Maintenance and Repair

- High pressure, medium pressure and low pressure rotors disassembly and assembly.
- High pressure, medium pressure and low pressure stages treatments.
- Steam sealing body disassembly and maintenance.
- Turbine outer and inner axial and radial adjustment control of wedges, making them work.
- Diameter of the gland vapor sealing system labyrinths control and, if necessary, replacement with new ones.
- Checking bearing oil sealing labyrinths and if necessary replacement with new ones.
- Test assemblies of gland casing and turbine casings joining between the halves with PAINT control and leveling if necessary.
- Making and evaluating the rotor lead test, Radial and axial adjustment, assembly, radial and axial stator-rotor clearance protocol Keeping values.
- Lubricating oil and lifting oil unit control and treatments.
- Main oil tank maintenance.
- With turbine oil change and mobile filtration unit filtering the oil.
- Maintenance and Installation of YB, OB, AB Turbines.
- The entire rotor, including discs, couplings non-destructive testing methods of accessible areas, (magnetic particle test, ultrasonic test, TNT radiographic examination) and microstructure examination, internal crack and superficial crack controls, inside material Performing necessary tests such as errors, life analysis.
- Diametral measurements of the rotor, bearing journals and Before disassembling the moving blades, Taking axial measurements.
- Main oil pump maintenance, testing and adjustment.
- Maintenance of instant stop, by-pass and regulation valves and repairs.
- Disassembly of Turbine Bearings Maintenance of pressure tests making and assembling.

- Bed penetrant tests.
- Bed NDT tests.
- Mattress white metal adhesion tests.
- Paint contact between bearing and rotor printing surface.
- Drawing of bearing clearance clearances.
- Turbine fixed and moving wing maintenance and replacement.
- Turbine rotor blades assembly and disassembly.
- Crack and NDT tests of rotor and stator blades.
- Sandblasting of rotor - stator blades and discs.
- Disassembly of air and vapor tight labyrinths Assembling and processing.
- Renewal and processing of oil seals
- Repair of rotor blade bandages.
- Painting test of turbine outer and inner bodies. (tightness test), weld fill if required made and grinding.
- All couplings in the turbine are measured and Calculation and adjustment in the process.
- Evaluation of turbine parts after turbine is opened (visible evaluation).
- Measurement and evaluation of turbine axles.
- Elimination of vibration problems.
- Deployment.

### B-Steam Turbine Generator Maintenance and Repair

- Rotor disassembly and assembly.
- Check ring ovality, if necessary grinding process in place.
- Exciter disassembly maintenance and assembly.
- Hydrogen sealing rings disassembly and maintenance.
- Generator winding cleaning and drying process.
- Generator winding control and change.
- Control of stator wedges.
- Insulation fiber disassembly and maintenance.
- Adjusting the coupling between turbine and generator.

## OUR ACTIVITIES

- Disassembly, maintenance and conducting pressure tests.
- Generator insulation tests.
- Conducting air and hydrogen tightness tests.
- Performing generator NDT tests.
- Air gap measurement.
- Lath tightness test.
- Heater tests.
- AC and DC insulation resistance measurement (Megger, Power Factor Tip-up, Partial discharge) Core test (ELCID).
- Rotor and stator cleaning.
- Winding heads controls.
- Warning ring ovality control.
- Controls of rotor fan blades and bolts.
- Balance weight checks.
- Rotor tightness test.
- Painting the rotor.
- Controls and tests of bearings.
- Measurement and control of bearing lubrication clearances.
- Checking of sealing rings and housings.
- Electrical isolation of bearings and body control.
- Rotor and retaining ring runout control records.
- Generator stator coil gap measurement.

### Hydraulic Power Plants Generator Maintenance and Repair

- Manufacturing the rotor disassembly apparatus.
- Rotor disassembly and assembly.
- Chemical cleaning of generator rotor and stator operations.
- Retaining ring disassembly and assembly, insulation control.
- Dismantling, maintenance and repair of generator coolers conducting pressure tests.
- Control and maintenance of generator beds.
- Generator warning system disassembly and maintenance.
- Generator and stator winding control.
- Control of rotor and stator insulation paints and maintenance.

- Sealing rings disassembly, maintenance and assembly.
- Maintenance of auxiliary systems.
- Megger tests.

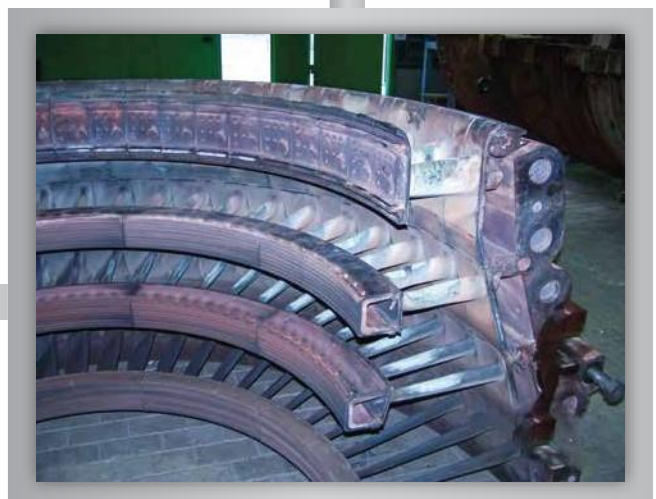
### WHR Turbine Maintenance and Repair

- Checking of all valves of the steam turbine and to be calibrated.
- Prevention of steam escaping from the front glands of the steam turbine sealing by opening the upper casing if necessary, control and maintenance of the elements required change it.
- Steam turbine tightness and leakage control.
- Steam turbine transmitters and all instruments calibration.
- Steam turbine alarm and disable switch tests, overspeed trip test.
- Steam turbine and lubrication system filters control.
- Condenser, feed water and cooling water filters control and cleaning.
- Drainage system control and testing.
- Condenser pipes baroscope control.
- Cable and terminal connection control, Electric cleaning boards.
- Condenser pollution control and cleaning.
- Where possible with the baroscope control.
- Steam Turbine-Generator coupling adjustment.
- Steam Turbine-Generator alarm and trip devices testing and calibration.
- Steam turbine, lubrication system electric motors control.
- Steam turbine bearings disassembly, measurements examination and elimination of problems.
- Hotwell pollution control.
- Steam turbine vacuum tank cleaning and control steam filter control.
- Steam turbine rotor and blades control.
- Turbine rotor runout control.
- Non-destructive testing (NDT).



# GAS TURBINE MAINTENANCE - REVISION

**BNC ENERJI**  
Saha Servis





# GAS TURBINE MAINTENANCE - REVISION

**BNC ENERJI**  
Saha Servis





# GENERATOR MAINTENANCE - REVISION

**BNC ENERJI**  
Saha Servis





# GENERATOR MAINTENANCE - REVISION

**BNC ENERJİ**  
Saha Servis





# STEAM TURBINE MAINTENANCE - REVISION

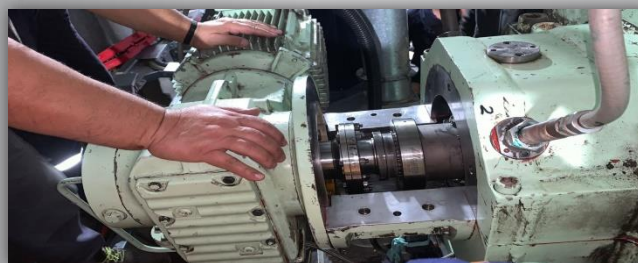
**BNC ENERJI**  
Saha Servis





# STEAM TURBINE MAINTENANCE - REVISION

**BNC ENERJİ**  
Saha Servis





# STEAM TURBINE MAINTENANCE - REVISION

**BNC ENERJİ**  
Saha Servis





# STEAM TURBINE MAINTENANCE - REVISION

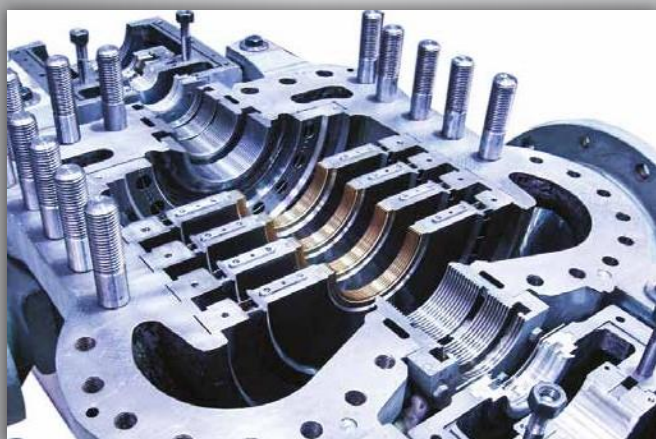
**BNC ENERJI**  
Saha Servis





# TURBIN MAINTENANCE - REVISION

**BNC ENERJİ**  
Saha Servis





# VALF MAINTENANCE - REPAIR

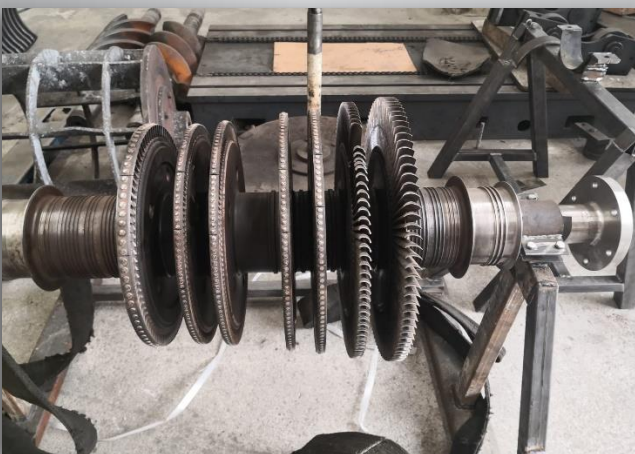
**BNC ENERJİ**  
Saha Servis





# VALF MAINTENANCE - REPAIR

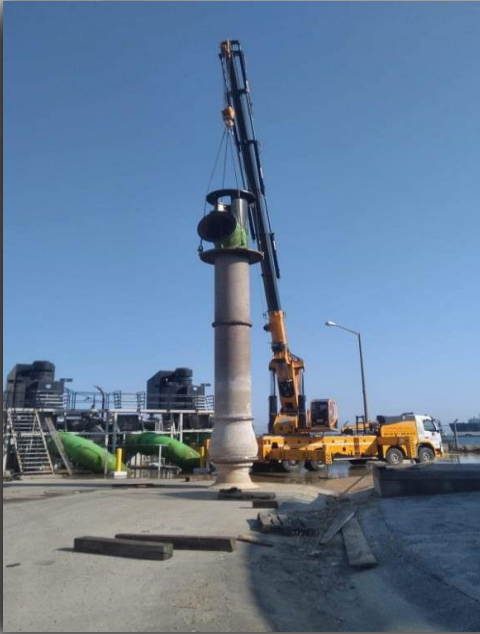
**BNC ENERJİ**  
Saha Servis





# PUMP MAINTENANCE - REPAIR

**BNC ENERJİ**  
Saha Servis



## OUR REFERENCES

### STEAM TURBINES

10 MW Steam Turbine (Çin)  
Yatağan Thermal Power Plant  
Ambarlı Natural Gas Combined Cycle Power Plant  
Cement Plants WHR Turbine and Generator Maintenance  
Mimsan Biomass Electric Power Plant  
Orhaneli Thermal Power Plant (Çelikler Holding)  
BEMKA Energy Bio Mass Power Plant (KOZAN)  
RANTEKO Energy Bio Mass Plant (UŞAK)

### GAS TURBINES

Ambarlı Natural Gas Turbines  
Bosen Enerji Combined Cycle Power Plant  
Doga Enerji Gas Turbines  
ISKI Gas Turbine  
Jenbacher Gas Turbine Generator Maintenance

### GENERATORS

Ambarlı Natural Gas Generator Maintenance  
Ambarlı Steam Turbine Generator Maintenance  
Çatalağazı Thermal Power Plant Generator Vacuum  
İlteknö-Sincar Hyundai Generator Maintenance  
Karadeniz Enerji Powership  
Kemerköy-Yeniköy Thermal Power Plant  
Necef Çimento Generator Maintenance  
Aliağa Combined Cycle Power Plant  
Yatağan Thermal Power Plant Generator Maintenance  
KARTEKS Generator Maintenance

### POMPA BAKIMI

EÜAŞ Trakya Elektrik AŞ

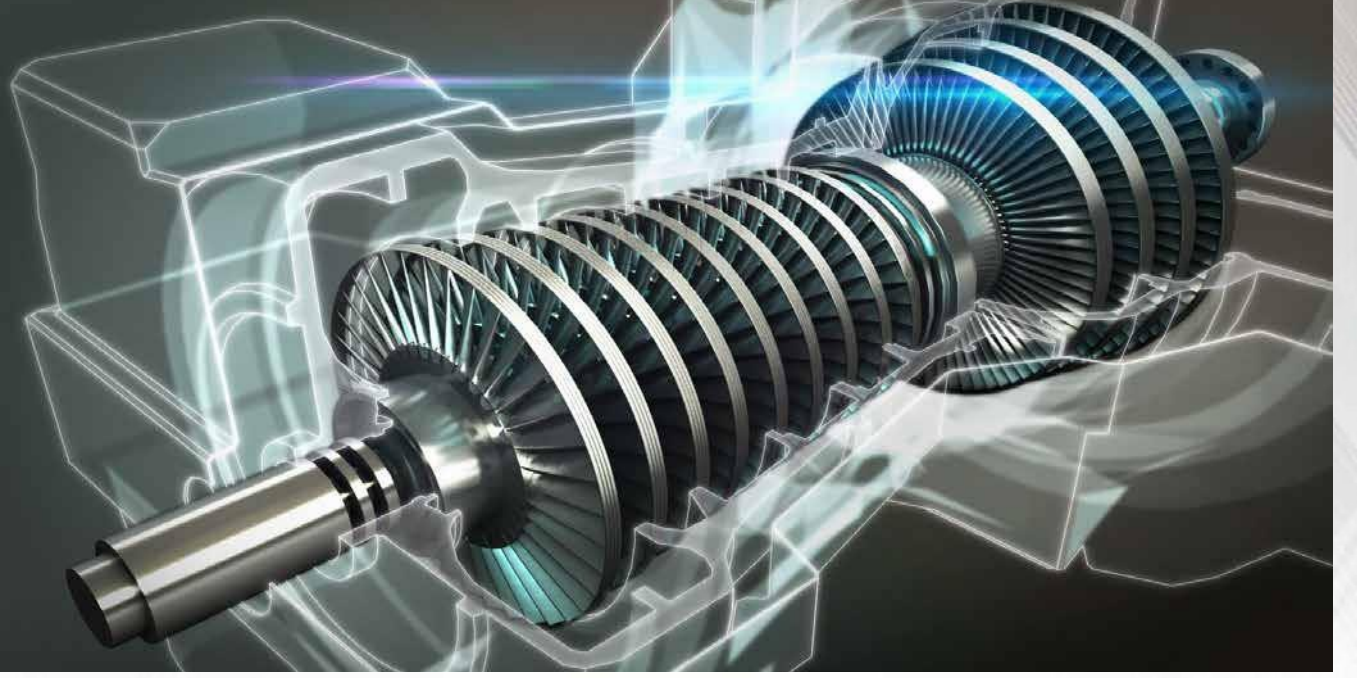
### MOTOR BAKIMI

CATES Thermal Power Plant

### VALF BAKIMLARI

İÇTAŞ Medical Waste Power Plant





**E-POSTA:**

info@bncenerji.com  
cemalbinici@bncenerji.com  
www.bncenerji.com



**TELEFON:**

05335451922



**ADRES:**

Merkez Mahallesi Namık Kemal Caddesi  
Afacan Sokak No: 11-C AVCILAR - İstanbul  
AVCILAR VERGİ DAİRESİ NO: 178 155 1150  
MERSİS NO:0178155115000001 TİCARET SİCİL NO: 328001-5